



Apartment 1, Macarthur Gardens,  
Whitehall Road,  
Cradley Heath,  
West Midlands B64 5BL

*Guide Price £165,000*

*...doing things differently*





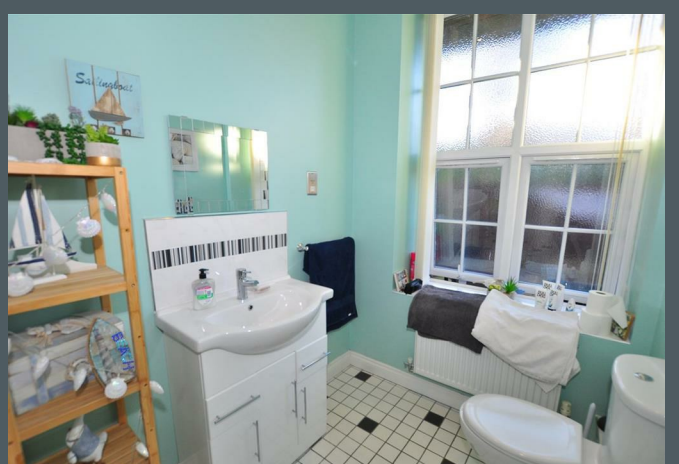
GROUND FLOOR FLAT WITH NO UPWARD CHAIN. Within this listed building we are proud to offer this spacious two bedroom apartment brimming with character and must be viewed to be fully appreciated. The property is ideally located within close proximity to a range of local shops, amenities and Cradley train station. The communal areas come complete with electric gates and allocated parking giving access to the apartments own private garden, whilst the flat itself includes open plan lounge/kitchen, two bedrooms, master with en-suite (wet room), separate shower room and large storage cupboard. Contact the office at your earliest opportunity to arrange your viewing. LA 23/3/22 V3 EPC = C



**Lex Allan Grove loves...**  
the convenient location











### Location

Cradley Heath lies to the North of Halesowen and falls within the boundaries of Sandwell Borough Council. As the name suggests it was originally Heathland between Cradley, Netherton and Old Hill. During the early 19th century a number of cottages were built encroaching onto the heath along the banks of the River Stour, mainly occupied by home industries such as nail making. During the industrial revolution Cradley Heath developed and became famous not only for nails but was once known as the world centre of chain making. It was the birthplace for the Black Country Bugle and is thought to be the historic home of the Staffordshire Bull Terrier. In fact you would be hard pushed to find anywhere more Black Country than Cradley Heath. Cradley Heath is great place for first time buyers on a limited budget and offers some fantastic opportunity for starter homes. It also retains some of the finest examples of grander Victorian Homes in street such as Sydney Road, which has been used by the BBC for filming *Peaky Blinders*.

Cradley Heath retains a very traditional High Street with not one but two market halls with a large Tesco in the centre. It has its own Train Station which provides links to Birmingham and to Worcester, alongside a bus interchange just outside to station. It is only a few minutes' drive from the large Merry Hill shopping centre. Close by is Haden Hill Park, a historical Victorian landscape with a Victorian Mansion and Tudor Hall. The landscape offers stunning views of the surrounding area. The park is a popular venue for historical local events and environmental activities. It has children's play areas, bowling greens, ornamental lakes and formal garden areas. It is also said that the hall is haunted.













**Open plan living space 21'7" x 12'1" min 17'4" min (6.6 x 3.7 min 5.3 min )**

Double glazed window to front, two central heating radiators, wall mounted electric fire, coving to ceiling, open plan entrance to:

**Kitchen area**

One and a half bowl sink with drainer and mixer tap, plumbing for automatic washing machine, gas hob with oven beneath, wall and base units with roll top work surface over, space for appliances, complementary tiling to walls, inset ceiling light points.

**Inner hallway**

Having doors radiating to:

**Bedroom one 8'10" x 14'5" (2.7 x 4.4 )**

Double glazed French doors giving access to rear court yard, central heating radiator, walk in storage cupboard/wardrobe.

**Bedroom two 8'6" x 13'5" (2.6 x 4.1 )**

Double glazed window to rear, central heating radiator.

**Wet room**

Double glazed obscured window to rear, shower with wet room floor, vanity wash hand basin, w.c., central heating radiator, complementary tiling to walls, inset ceiling light point.

**Shower room**

Double glazed obscured window to rear, vanity sink, shower cubicle, w.c., complementary tiling to walls, inset ceiling light points.

**Rear garden**

Having patio area with raised slated chippings, gate giving access to rear parking having allocated parking space with secure gated entrance.

**Tenure**

Reference to the tenure of a property are based on



information supplied by the seller. We are advised that the property is Leasehold, ground rent and other charges may be payable. A buyer is advised to obtain verification from their solicitor. We are advised that the years remaining on the lease is 188 with an annual service charge of £840.00.

### Money Laundering Regulations

In order to comply with Money Laundering Regulations, from June 2017, all prospective purchasers are required to provide the following -

1. Satisfactory photographic identification.
2. Proof of address/residency.
3. Verification of the source of purchase funds.

In the absence of being able to provide appropriate physical copies of the above, Lex Allan Grove reserves the right to obtain electronic verification.

### Referral Fees

We can confirm that if we are sourcing a quotation or quotations on your behalf relevant to the costs that you are likely to incur for the professional handling of the conveyancing process. You should be aware that we could receive a maximum referral fee of approximately £175 should you decide to proceed with the engagement of the solicitor in question. We are informed that solicitors are happy to pay this referral fee to ourselves as your agent as it significantly reduces the marketing costs that they have to allocate to sourcing new business. The referral fee is NOT added to the conveyancing charges that would ordinarily be quoted.

We can also confirm that if we have provided your details to Infinity Financial Advice who we are confident are well placed to provide you with the very best possible advice relevant to your

borrowing requirements. You should be aware that we receive a referral fee from Infinity for recommending their services. The charges that you will incur with them and all the products that they introduce to you will in no way be affected by this referral fee. On average the referral fees that we have received recently are £218 per case.

The same also applies if we have introduced you to the services of Mr Tony Lowe of Green Street Surveys who we are confident will provide you with a first class service relevant to your property needs, we will again receive a referral fee equivalent to 20% of the fee that you pay to Green Street Surveys. This referral fee does not impact the actual fee that you would pay Green Street Surveys had you approached them direct as it is paid to us as an intermediary on the basis that we save them significant marketing expenditure in so doing. If you have any queries regarding the above, please feel free to contact us.

### Council Tax Banding

Tax Band is B

**IMPORTANT NOTICE:** 1. No description or information given whether or not these particulars and whether written or verbal (information) about the property or its value may be relied upon as a statement or representation of fact. Lex Allan Grove Ltd do not have any authority to make representation and accordingly any information is entirely without responsibility on the part of Lex Allan Grove Ltd or the seller. 2. The photographs (and artists impression) show only certain parts of the property at the time they were taken. Any areas, measurements or distances given are approximate only and interior measurements are wall to wall. 3. Any reference to alterations to, or use of any part of the property is not a statement that any necessary planning, building regulations or other consent has been obtained. 4. No statement is made about the condition of any service or equipment.



**LexAllan  
Grove**

**Lex Allan Grove Estate Agents**  
18 Hagley Road, Halesowen  
West Midlands B63 4RG

**0121 550 5400**  
**lexallangrove.com**  
**info@lexallangrove.com**